



## **MANAGE Agricultural Extension “Evening4Learning (E4L)” Webinar Series**

### **Theme:**



**Agricultural Extension: An Exciting profession for Future (for UG students of Agriculture & PG students of Agricultural Extension)**



### **Topic:**

**“International Pathways in Agricultural Extension: FAO, WORLD BANK, USAID, CGIAR, and other organizations”**



### **Schedule:**

**20-08-2025, 16:45- 17:30 PM**



## About the Program

The MANAGE Agriculture Extension “Evening4Learning (E4L)” Webinar Series is aimed at enhancing knowledge and professional engagement in the field of agricultural extension. The five-day series is structured with each day focusing on a distinct topic under a common theme, allowing participants to gain comprehensive insights into key areas of extension. The program is intended for a diverse audience, including postgraduate and doctoral students, agricultural faculty, and industry professionals. It covers broad themes ranging from entrepreneurship and sustainability to emerging technologies in agriculture.

**MANAGE**  
**Agricultural Extension**  
**“Evening4Learning”**  
**Webinar Series**  
**August 18-22, 2025**  
**16.00-17.30 PM (IST)**

**Theme : Agricultural Extension: An exciting profession for Future** (for UG students of Agriculture & PG students of Agricultural Extension)



## Speaker

**Dr. Suchiradipta Bhattacharjee**

Policy Engagement Specialist

IWMI

[S.Bhattacharjee@cgiar.org](mailto:S.Bhattacharjee@cgiar.org)

 Suchiradipta B.

Dr. Suchiradipta Bhattacharjee is a Policy Engagement Specialist at International Water Management Institute (IWMI), where she works on water governance and political economy. She has prior experience with national institutions such as National Institute of Agricultural Extension Management (MANAGE) and the Indian Institute of Science, and has contributed to the Science, Technology, and Innovation Policy initiative.

## Role of Agricultural extension

Agricultural extension plays a vital role in bridging the gap between research and practice by facilitating technology transfer, strengthening community engagement, fostering problem-solving and innovation, and supporting the co-development of solutions with farmers. It was emphasized that contemporary agricultural extension has evolved beyond the traditional “lab-to-land” model and now incorporates co-learning, facilitation, governance, and systems-based approaches.

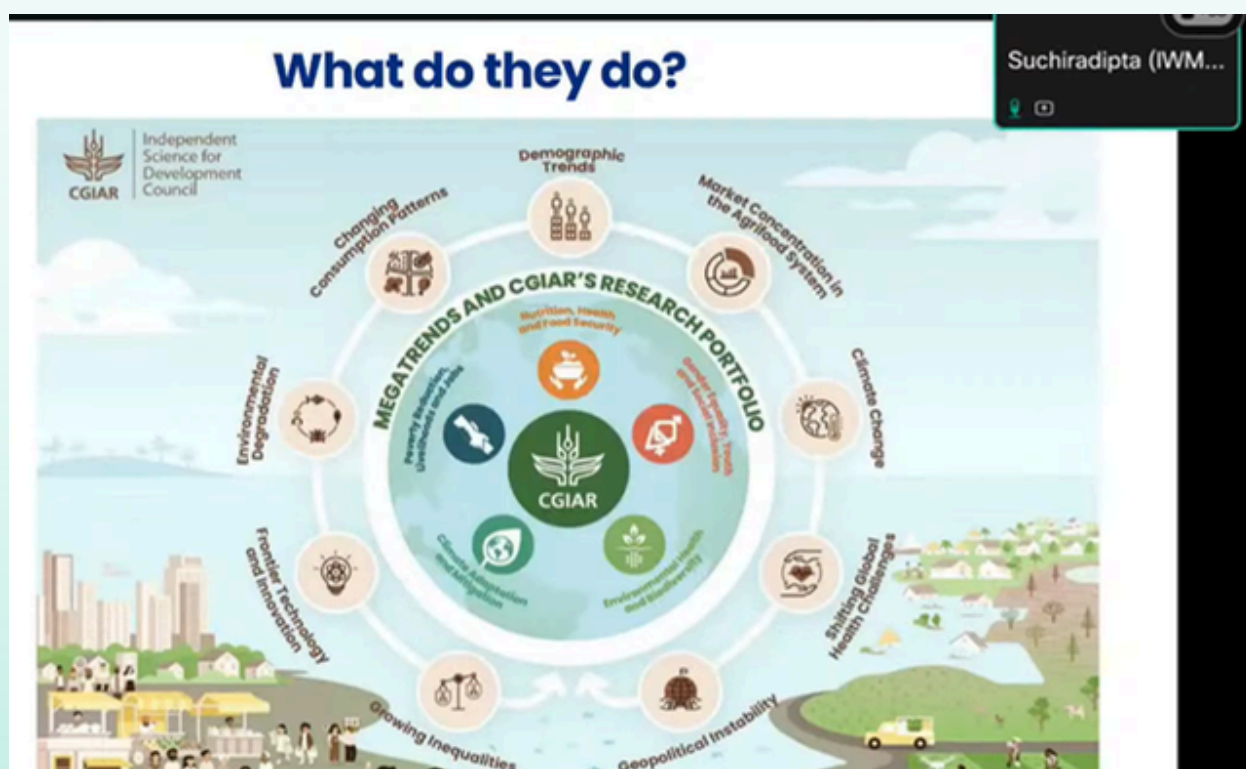
Agricultural extension was also highlighted as being central to addressing pressing global challenges related to food and nutrition security, income inequality and livelihood insecurity, climate change and global warming, waste management and circular economy, and sustainable livestock and farming systems. These areas closely align with the priority focus areas of international development organizations.

## Role of International organizations

International organisations such as Consultative Group on International Agricultural Research (CGIAR), Food and Agriculture Organization (FAO), and the World Bank operate at global, national, and grassroots levels. They synthesize knowledge and evidence from diverse geographical contexts to inform policies, strategies, and development interventions. While their mandates are global, a substantial portion of their work remains firmly rooted in local and community-level engagement, particularly through agricultural extension systems.

## Core areas of impact across these organizations include:

- Strengthening food security and nutrition
- Promoting environmental health and biodiversity conservation
- Supporting climate change adaptation and resilience
- Advancing gender equity and social inclusion
- Enabling infrastructure development and digital transformation



# Skills Required for Careers in International Organisations

## Professional (Hard) Skills

- **Technical expertise:** Essential for analysing, designing, and strengthening extension systems and their impact.
- **Research and data analytics:** Critical for evidence-based decision-making, programme evaluation, and high-quality publications.
- **Thematic specialisation:** In-depth knowledge in priority areas such as gender, governance, climate change, or sustainability, aligned with organisational mandates.
- **Grant and proposal writing:** Increasingly important for mobilising resources, including competitive grants from international and local funding sources.

## Soft Skills

- **Diplomacy and stakeholder engagement:** Vital for building trust, managing partnerships, and sustaining professional networks that support long-term career growth.
- **Problem-solving:** Ability to manage complexity, address challenges, and handle multiple projects and priorities effectively.
- **Language proficiency:** Fluency in one or more UN official languages (English, French, Spanish, Arabic, etc.) enhances global mobility, collaboration, and professional effectiveness.
- **Time management:** Effective planning and prioritisation to meet deadlines and balance diverse responsibilities in dynamic work environments.

## Key highlights

- Agricultural extension is evolving beyond the traditional “lab-to-land” approach to a systems-based, participatory model that addresses global challenges such as food security, climate change, waste management, and livelihood sustainability.
- International organisations including IWMI, FAO, and the World Bank operate across global to grassroots levels, with strong emphasis on local engagement through agricultural extension to inform policy, research, and development interventions.
- Careers in international organisations require a combination of strong technical and research skills, thematic specialisation, grant-writing capacity, and soft skills such as stakeholder engagement, diplomacy, and time management.
- Emerging areas such as circular economy, biomass feedstock conversion, and waste-to-energy are gaining significant attention and funding, offering promising career and research opportunities for young professionals.

## Interactive discussion

### 1. What career and research opportunities exist in biomass feedstock conversion and waste-to-energy, and is this a promising field to pursue?

Biomass feedstock conversion and waste-to-energy are emerging as highly promising areas within the circular economy. With rising global waste volumes, increasing emphasis is placed on converting waste into valuable resources such as biofuels and energy. As a result, circular economy and waste-to-energy initiatives are receiving significant attention and funding from development and research organisations, highlighting their strong potential for innovation, investment, and long-term sustainable impact.

### 2. What internship opportunities available in international organisations, and how can students or early-career professionals apply for them?

Many international organisations offer internships on an ad hoc basis rather than through formal programmes, often engaging interns via project collaborations and partnerships with universities (e.g., IWMI and MANAGE). Interested candidates typically submit CVs for consideration during internship cycles. Students and early-career professionals should regularly monitor official websites of organisations such as FAO, the World Bank, MANAGE, and other international NGOs and CGIAR centres. Subscribing to newsletters helps with timely updates, while platforms like Internshala can supplement searches—though official organisational websites remain the most reliable sources.

### 3. What advice would you give to someone trying to choose between a career in academia, government, or the corporate sector?

Career choices among academia, government, and corporate sectors depend largely on individual interests and motivations. Research-oriented and international organisations function similarly to academia, where research output and regular publication in credible, peer-reviewed journals are central to career progression. Teaching may vary, but research remains the core focus. In contrast, the corporate sector follows different priorities and evaluation systems. Overall, aligning career decisions with personal interests and professional passion leads to greater satisfaction and long-term success.

**E4L Report Prepared by:  
Dr. Vavilala Priyanka  
MANAGE Fellow**

**YouTube Link:**  
<https://youtu.be/S5UVvwx0onU?t=3028>

MANAGE - Center for Agricultural Extension Innovations, Reforms and Agripreneurship (MANAGE- CAEIRA)  
**National Institute of Agricultural Extension Management (MANAGE)**  
Rajendranagar, Hyderabad- 500 030, INDIA